



交通運輸策略性研究  
TRAFFIC AND TRANSPORT  
STRATEGY STUDY

# 汀九橋智慧公路 先導計劃



*Smart Motorway  
Pilot Scheme  
at Ting Kau Bridge*





# 先導計劃 *The Pilot Scheme*

- 優化汀九橋南行線現時的交通管制及監察系統和相關儀器，全天候監察行車狀況。  
Enhance the existing Traffic Control and Surveillance System and associated equipment at Ting Kau Bridge southbound for providing continuous monitoring of the traffic condition.
- 更多的可變信息顯示屏提供實時道路資訊。  
More variable message signs to provide real-time road traffic information.
- 在事故發生時，因應實際狀況及配合現場人員指示，利用路肩安全有序地疏導車流。  
During incident scenarios, the hard shoulder can be opened to ease traffic flow in a safe and orderly manner based on the actual situation and in accordance with on-site staff's instructions.

可變信息顯示屏  
Variable Message Sign

可變速度限制標誌  
Variable Speed Limit Sign

全覆蓋交通事故  
自動偵察系統  
Full coverage  
Automatic Incident  
Detection System

行車線管制燈號  
(新增於路肩上方)  
Lane Control Signal  
(added above hard  
shoulder)

路肩  
Hard Shoulder



## 預期效益 *Benefits*

- 減低因事故需要封閉行車線時對交通造成的影響。  
Reduce the traffic impact due to lane closure during traffic incidents.
- 提升該路段整體的行車安全性以及對交通事故的應對能力。  
Enhance road safety and capabilities in responding to traffic incidents.

## 背景 *Background*

運輸署現正進行《交通運輸策略性研究》，並提出「邁向智慧公路管理應用」作為初步建議之一。該建議旨在利用科技充分善用有限的道路資源及提升主要幹道在應對緊急情況時的抗禦力。我們將於汀九橋南行線推展智慧公路先導計劃以測試相關技術。

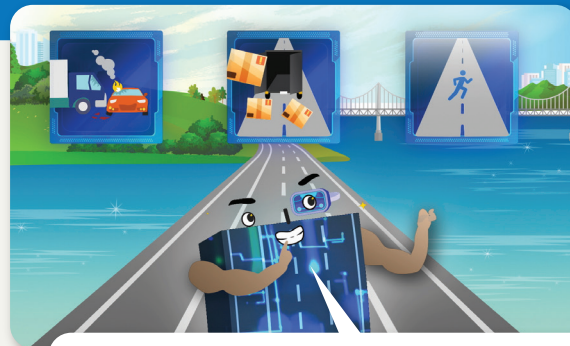
The Transport Department (TD) is taking forward the Traffic and Transport Strategy Study (TTSS) and proposed "Moving Towards the Application of Smart Motorway Management" as one of the initial recommendations. This recommendation aims to harness technology to fully utilise limited road resources and enhance the resilience of arterial roads in responding to emergencies. To test the relevant technology, we are going to roll out a smart motorway pilot scheme at Ting Kau Bridge southbound.



# 精明駕駛貼士 *Tips on Smart Driving*

「先導計劃」將於汀九橋南行線應用多種靈活的事務應對方案，亦將為駕駛者提供更多實時交通資訊。當路肩臨時開放時，駕駛者需要密切留意並遵從交通管制燈號的行事指示。

The pilot scheme will allow the flexible implementation of different traffic schemes at Ting Kau Bridge southbound in response to traffic incidents. It will also provide drivers with more real-time traffic information. Drivers should pay close attention and follow the traffic signs in case the hard shoulder is opened for traffic.



智慧公路可以因應不同的交通情況，建議合適的應對方案。  
Smart motorways will recommend suitable action plans in response to different traffic scenarios.

## 正常交通情況 *Normal Operation*



- 1 行車線上方的管制燈號會顯示綠色箭咀，表示車輛可以駛進。

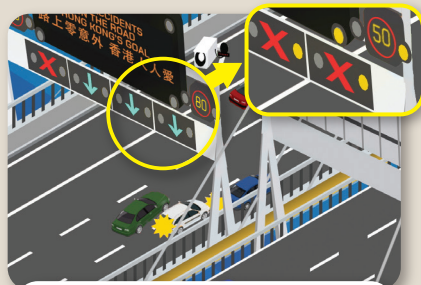
Green arrows will be displayed in the lane control signals above the traffic lanes, indicating that vehicles may proceed.

- 2 而路肩上方的燈號則會顯示紅色交叉，提醒駕駛者不可以上路肩行車，僅限發生故障時駛進。

The lane control signal above the hard shoulder will display a red cross, reminding drivers not to enter the hard shoulder except for emergency use.

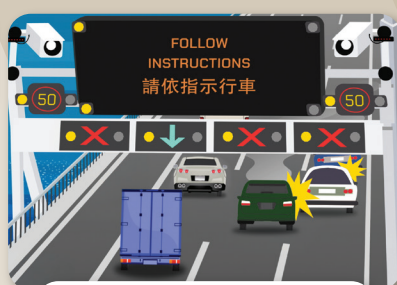


## 事故情況 *Incident Scenario*



- 1 智慧公路可以在短時間內偵察到交通事故，並適當地應對。

Smart motorways can detect traffic incidents within a very short period of time and respond appropriately.



- 2 因應現場情況，可以開放路肩疏導車流。

The hard shoulder can be opened to ease traffic flow depending on the actual circumstances.



- 3 路肩開放時，上方的管制燈號會顯示綠色箭咀，表示可以駛進。

The lane control signal above the hard shoulder will show a green arrow, indicating that drivers can proceed along the hard shoulder when it is opened for traffic.



- 4 駕駛者須繼續留意顯示屏的最新信息及相關燈號，在事故完結後按指示駛離路肩。

Drivers should always be attentive to the latest information in message signs and relevant signals, and leave the hard shoulder when instructed after the incident.



# 未來路向 *Way Forward*

我們將於2024年底在汀九橋南行線推行「先導計劃」。

運輸署會持續監察該路段的交通數據，以檢討「先導計劃」的成效並制訂未來智慧公路的實施策略。

We will launch the pilot scheme at Ting Kau Bridge southbound by the end of 2024.

TD will continuously monitor the traffic data of the road section to review the effectiveness of the pilot scheme and formulate the implementation strategy for smart motorways.



先導計劃短片  
Video For Pilot Scheme



《交通運輸策略性研究》網站  
TTSS Website



聯絡我們 CONTACT US

運輸署 TRANSPORT DEPARTMENT



2804 2600



九龍油麻地海庭道十一號  
西九龍政府合署南座十二樓  
12/F, South Tower,  
West Kowloon  
Government Offices,  
11 Hoi Ting Road,  
Yau Ma Tei, Kowloon



2186 7519



enquiry@ttss.gov.hk



www.ttss.gov.hk



運輸署

Transport Department

ARUP